

Model 7500

Floating Flat Panel Arm



The award-winning 7500 Radial Arm is a remarkable work tool. Effortlessly position your monitor exactly where you want it, and add flexibility to your work style. Suspend your flat panel above the desk surface and reclaim your valuable space. Innovative cable management routes cables inside the arm, in order to keep your desk organized. You'll never work the old and cluttered way again!



Folds flat to save maximum space



46 cm of vertical range



Over 200 degrees of monitor tilt

FEATURES

- ▲ Reposition the monitor with one hand – no knobs to turn
- ▲ Tilt monitor up to 200 degrees
- ▲ Includes *FLEXmount*™ – six different mounting options in one kit
- ▲ Compatible with all VESA monitors – VESA mounting plates included
- ▲ Includes cable management system – cables concealed in arm
- ▲ Available in black, silver, and white (inquire about custom colors)

Phone: 1300 798 050 | Fax: 1300 798 052 | E-mail: enquiry@lcdmonitorarms.com.au | Web: www.lcdmonitorarms.com.au

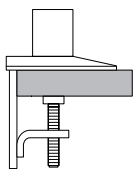
Model 7500

Specifications

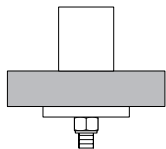


MOUNTING OPTIONS

Desk Clamp



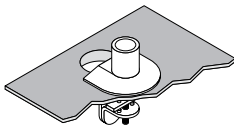
Thru-Desk



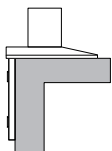
Wall Mount



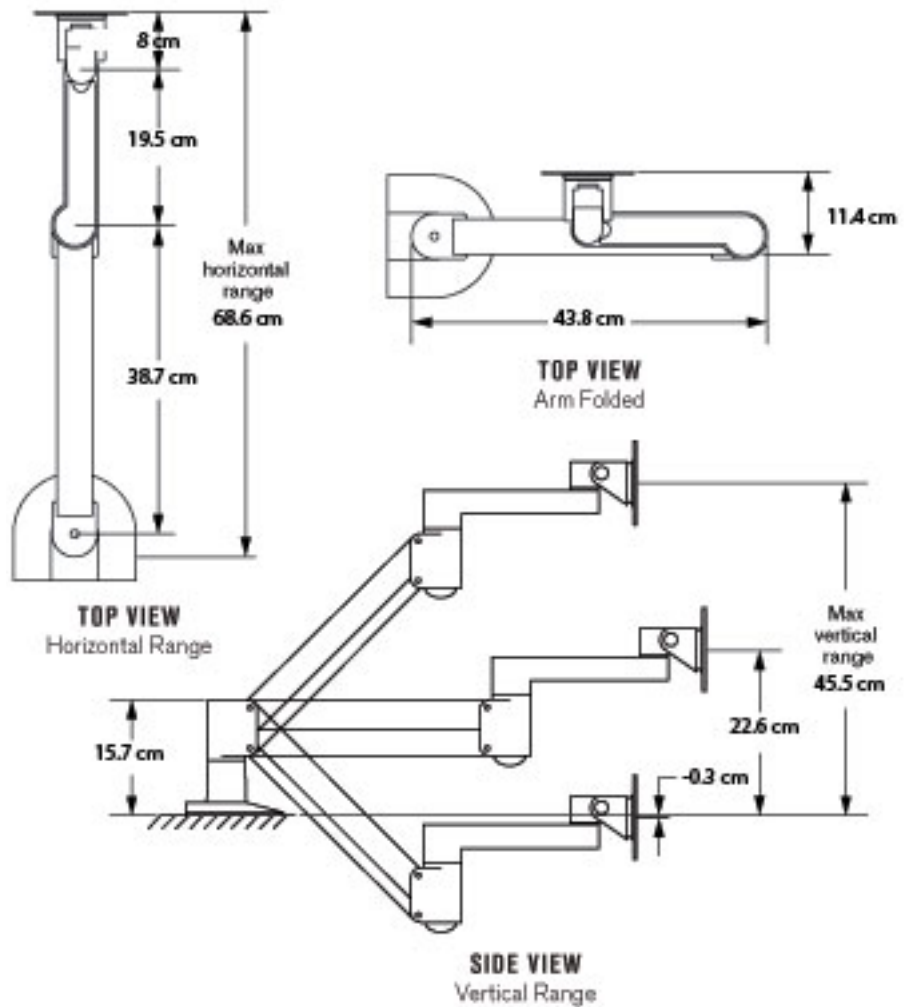
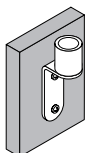
Grommet Mount (hole greater than 6.4 cm)



Side Mount



Reverse Wall Mount



- Horizontal range: 68.6cm
- Rotation: 360 degrees at three joints
- Monitor tilt: 200 degrees
- Monitor pivot: Landscape to portrait
- Monitor compatibility: VESA® 75mm and 100mm
- Cable management: Cables are concealed in arm
- Mounting options: FLEXmount™ – six different mounting options in one kit including desk clamp, thru-desk and wall
- Monitor weight: 2.7 - 9.5 kg (Model 7500-800)
 6 - 20 kg (Model 7500-1500)