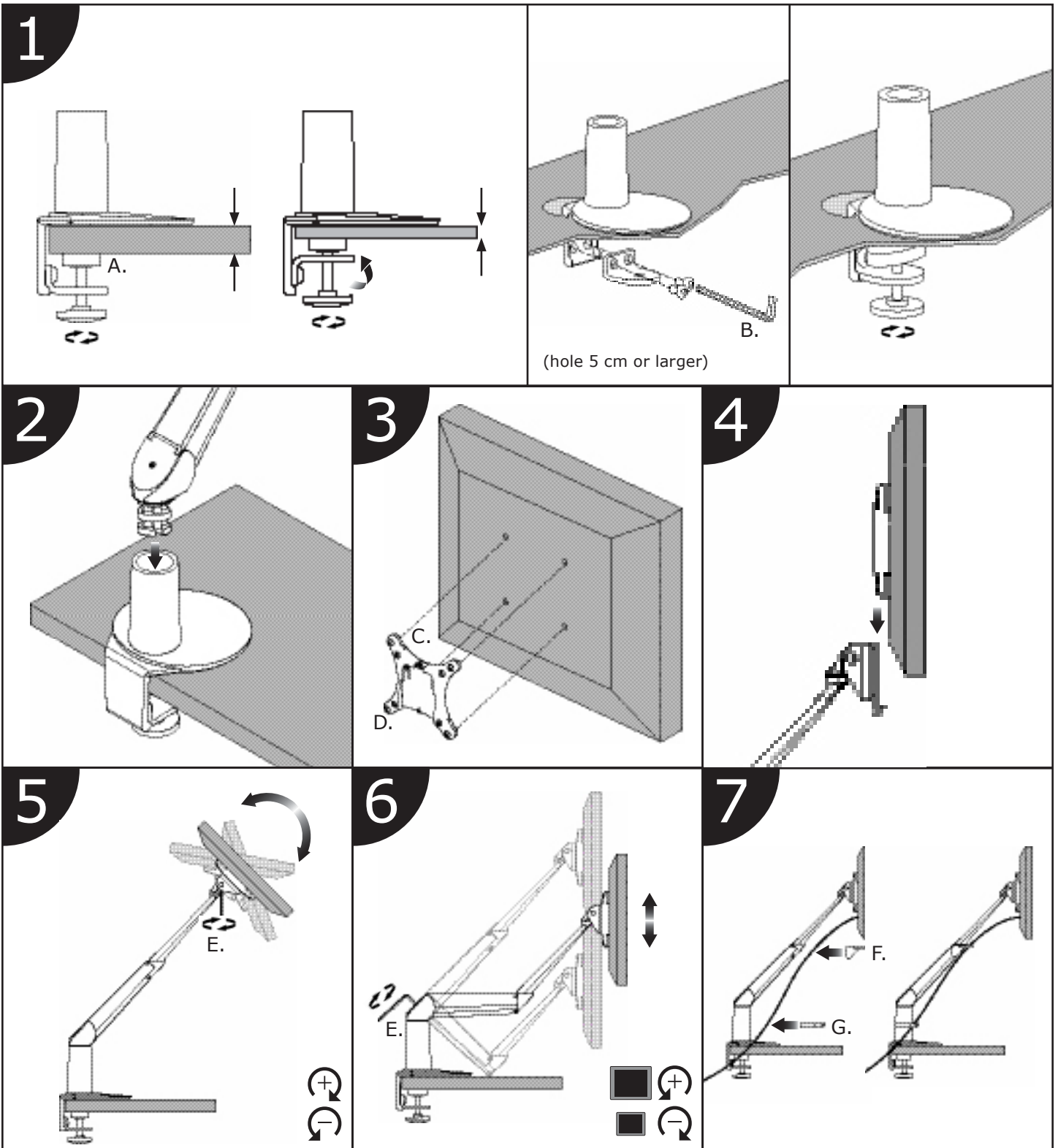


EVO™ 5545 Installation Instructions








Web: www.LCDmonitorarms.com.au | Ph: 1300 798 050



EVO™ 5545

Parts List

Web: www.LCDmonitorarms.com.au | Ph: 1300 798 050

ITEM	DESCRIPTION / PART NO.	QUANTITY
A. 	FLEXmount screw plate 104753	1
B. 	7/32" Allen wrench 701127	1
C. 	Spacer-screw retainer 104887	4
D. 	M4 x .7 x 18mm screw 704917	4
E. 	3mm hex key 701313	1
F. 	Cable clip 105104	1
G. 	Lower cable clip 104484	1